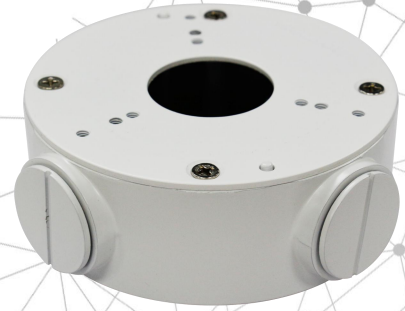


QV-LB02

Junction Box for Camera



Key Features

Aluminum alloy with surface spray treatment

Specification

Parameters	
Appearance	White
Material	Aluminum alloy
Dimension	Φ 103.3 × 37.8 mm (Φ 4.07" × 1.49")
Weight	Approx. 615 g (1.36 lb.)

Dimensions

